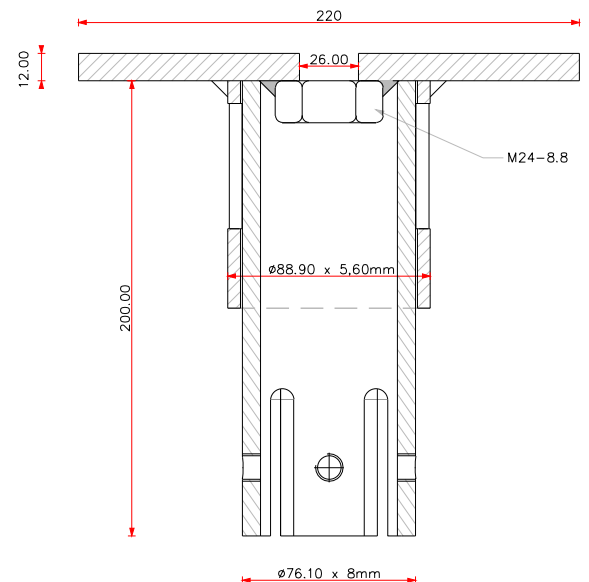


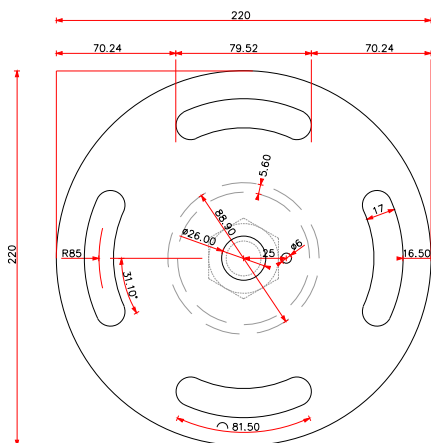


Art. no:	58321
Weight:	8,00 kg
Dimensions:	Pipe: 88,9 x 5,6 x 100 mm Flange: 12,0 x 220 mm
Materials:	Steel Type Pipe: S235 Steel Type Flange: S355 Surface treatment: Galvanized according to DIN EN ISO 1461
Installation:	Electric Ground Screw Driving Machine (Art.No: 12001) Pneumatic Ground Screw Driving Machine (Art.No: 12005) Hydraulic Ground Screw Driving Machine (Art.No: 12090)
Use:	Light construction e.g. porches, garden rooms and modular homes.
Fixation:	M24 / M16 Bolts

Cross cut view



Top view flange



Drawing description	PRO-SERIES ROUND FLANGE V-89 x 220mm	
Date	Signed	Sheet number
12/2018	DVDE	7 of 7
Drawing number	Format	Document status
58321-V1	A4	DEF.

Products to combine:

- 17021 – POLEHOLDER M20
- 17022 – L-BRACKET M16 80mm
- 17023 – L-BRACKET M16 160mm
- 70259 – HEA BEAM CLAMP M10-M12