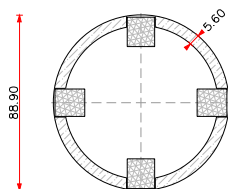


PRO-SERIES EXTENSION V-89 x 1000mm

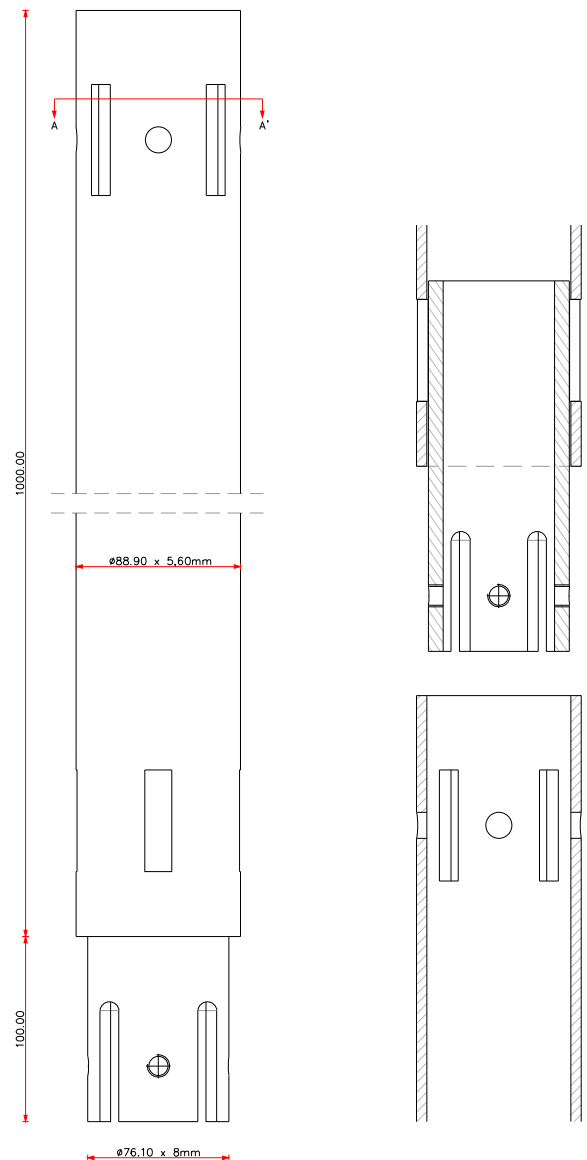


<b>Art. no:</b>	58312
<b>Weight:</b>	14,50 kg
<b>Dimensions:</b>	Pipe: 88,9 x 5,6 x 1000 mm
<b>Materials:</b>	Steel Type Pipe: S235 Surface treatment: Galvanized according to DIN EN ISO 1461
<b>Installation:</b>	Electric Ground Screw Driving Machine (Art.No: 12001) Pneumatic Ground Screw Driving Machine (Art.No: 12005) Hydraulic Ground Screw Driving Machine (Art.No: 12090)
<b>Use:</b>	Light construction e.g. porches, garden rooms and modular homes.
<b>Fixation:</b>	M12 Bolts

Cross cut pipe (A-A')



Side view



<b>Drawing description</b>	PRO-SERIES EXTENSION V-89 x 1000mm	
<b>Date</b>	<b>Signed</b>	<b>Sheet number</b>
12/2018	DVDE	4 of 7
<b>Drawing number</b>	<b>Format</b>	<b>Document status</b>
58312-V1	A4	DEF.

Products to combine:

- 58301 – GROUND SCREW V-89 x 1200mm
- 58302 – GROUND SCREW V-89 x 2100mm
- 58321 – V-89 ROUND FLANGE 220x12mm

FIRST BASE GROUND SCREWS  
Patersweg 2, 5406 XJ  
Uden, Holland.

[info@firstbasegroundscrews.com](mailto:info@firstbasegroundscrews.com)  
[www.firstbasegroundscrews.com](http://www.firstbasegroundscrews.com)  
0031 413 432 052